

# Springfield Utility Board's Glenwood Substation

## Powering Redevelopment in Glenwood

### Project Overview

Glenwood is a one-square mile community along the Willamette River. It is under the jurisdiction of the City of Springfield.

Recognizing the corridor's housing and economic development possibilities, the City formalized a vision for the area in the [Glenwood Refinement Plan](#).

Infrastructure improvements outlined in the plan are underway, including the Franklin Blvd roadway expansion. Springfield Utility Board is also building a new substation to provide additional electric capacity to support development.



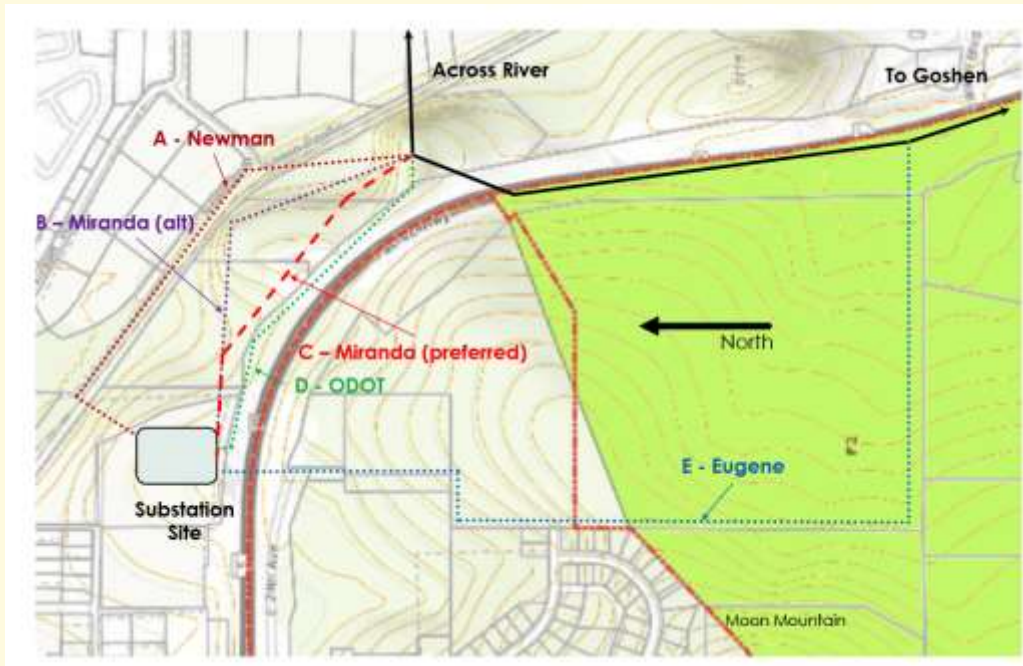
# Springfield Utility Board's Glenwood Substation

## Powering Redevelopment in Glenwood

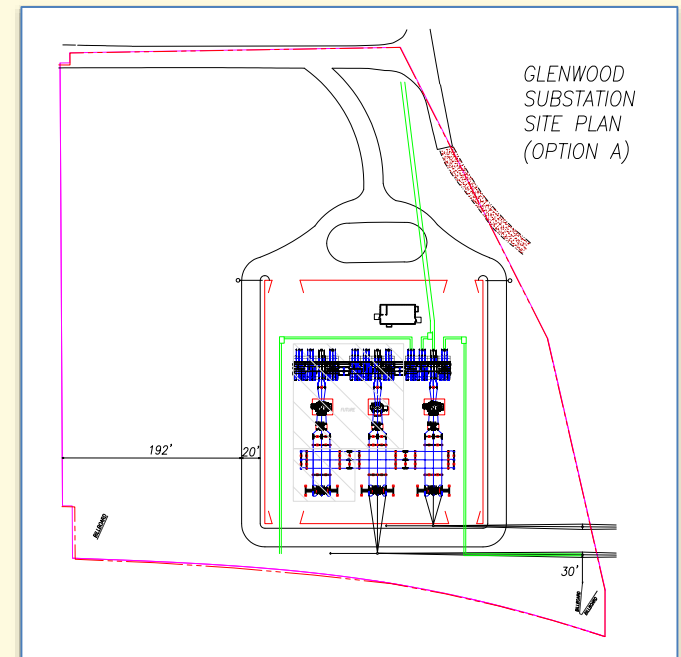
### What is a substation?

Substations are structures that take high-voltage electricity and transform it into voltages that can be safely distributed throughout populated areas.

Substation location:



Substation design:



# Springfield Utility Board's Glenwood Substation

## Powering Redevelopment in Glenwood

### Getting power to the substation

A transmission line will carry high-voltage electricity from Bonneville Power Administration power lines (from which SUB receives all its electricity) to the substation. Environmental, safety and land use issues are among the criteria considered when evaluating possible routes for a transmission line.





# Springfield Utility Board's Glenwood Substation

## Powering Redevelopment in Glenwood

### Transmission line route recommendation

The engineering report (right) shows the easements required to construct the transmission line along the preferred route.

The rendering (below) shows how the proposed transmission line will interact in its surroundings.

