



SPRINGFIELD UTILITY BOARD  
WATER DIVISION  
202 S. 18<sup>TH</sup> STREET  
SPRINGFIELD, OR 97477  
PH: 541-726-2396  
FAX: 541-747-7348

## Backflow Assembly Installation Requirements Residential Irrigation System (2" and Smaller Reduced Pressure Backflow Assembly)

**PROTECT YOUR FAMILY:** A backflow assembly is plumbing equipment the customer has installed on their water service that prevents unwanted substances from entering the public water supply and degrading water quality. Without proper backflow protection your plumbing system could endanger the health of others in the community who are using the public water supply.

**RESIDENTIAL PROPERTIES:** These properties have dwellings consisting of a single-family unit and/or up to four (4) units (four-plex), where the units are full-time dwellings.

### INSTALLATION REQUIREMENTS:

1. A Reduced Pressure Backflow Assembly (RPBA) shall be installed on private property at a location between a tap on the domestic service line and the irrigation system. All irrigation system piping shall be connected downstream of the RPBA.
2. Backflow assemblies are required to be installed above ground.
3. Backflow assemblies are required to be installed in a way that provides freeze protection. For irrigation systems that are turned off for the winter, the backflow assembly may be winterized or removed in lieu of an insulated enclosure. The customer is responsible for the winterization of the backflow assembly.
4. For outdoor locations in an enclosure, a bore-sighted drain to daylight (finished grade), able to discharge the full rated flow of the relief valve, is required. Enclosures shall be kept free of any debris, shall not contain loose fill materials of any kind, and shall not have objects that interfere with these installation requirements.
5. All clearances around the backflow assembly apply to outside, in-building, vertical and horizontal installations. Backflow assemblies shall be readily accessible with adequate room for testing and maintenance. Clearances may be waived (excluding ground clearances) for an enclosure, if the enclosure can be removed for backflow assembly testing and maintenance access.
6. Backflow assemblies shall be tested by a Certified Backflow Assembly Tester at the time of installation (prior to irrigation season, after repairs or relocation, and/or after a backflow incident) with the passing test results submitted to the Water Division within 10 (ten) days of testing. Upon receipt of the passing test report the Water Division shall inspect and verify the installation.

*Backflow assemblies and the installation of these assemblies shall be in combined accordance with the rules and requirements of SUB Policy, the Water Division's Cross Connection Control (CCC) Program Manual, Oregon Administrative Rules (OARs) and Oregon Plumbing Specialty Codes (OPSC).*

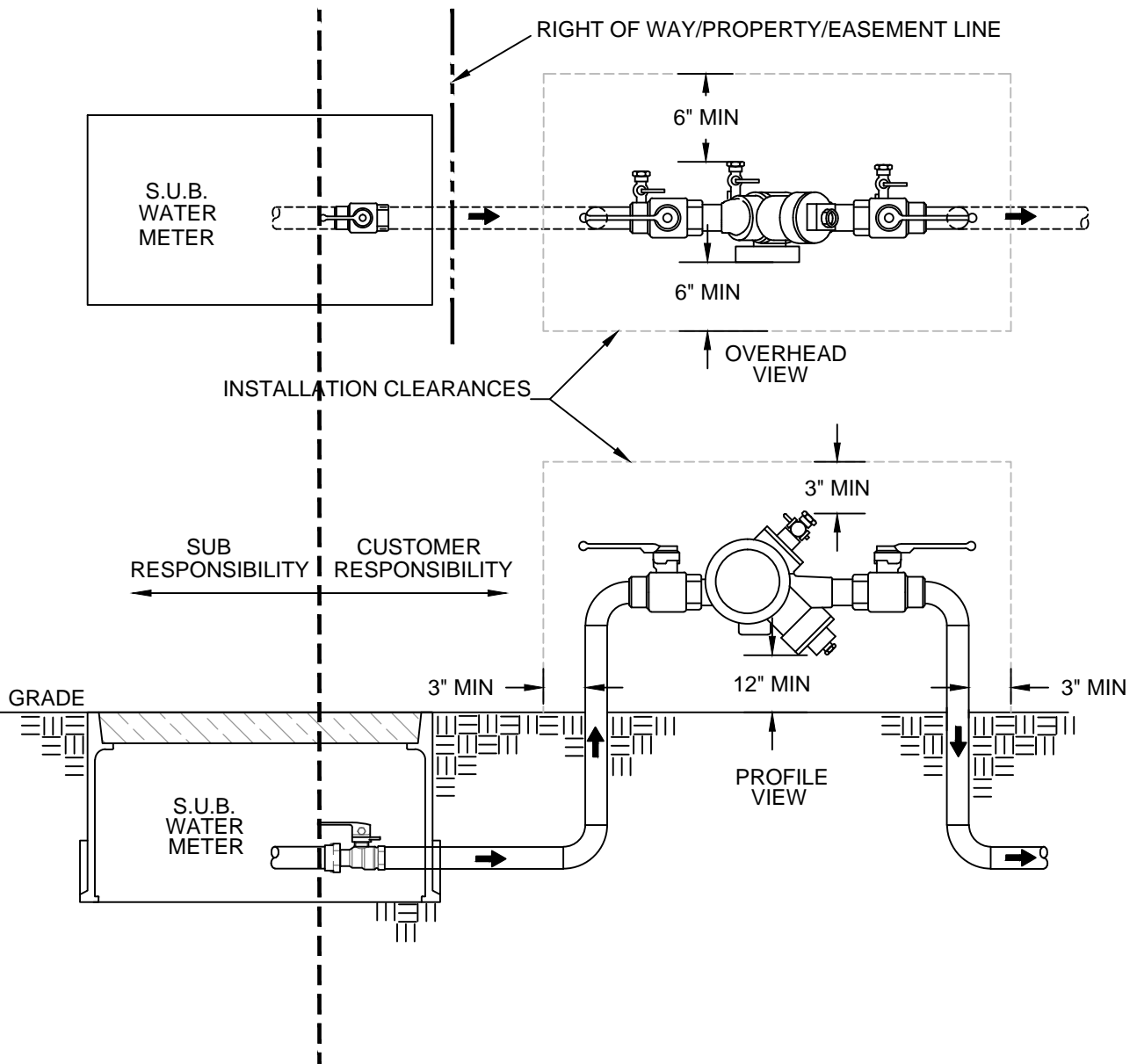
**Refer to the attached Reduced Pressure Backflow Assembly (RPBA) standard drawing (W2.00)**

For complete backflow assembly installation requirements please refer to SUB's CCC Program Manual available on SUB's website at:

<http://www.subutil.com/water/cross-connection-control-and-backflow-protection/>

**CITY OF SPRINGFIELD REQUIREMENTS:** A City of Springfield plumbing permit is required for backflow assembly installation. In cooperation with the City's Plumbing Inspector, the Water Division is asking that upon installation of an assembly, a copy of the initial test report be attached to the backflow assembly. This test report will be collected by the Plumbing Inspector prior to approval of the installation. If the assembly is in an exposed location, please place the test report in a sealed plastic bag for protection.


NOTE: THE REFERENCES PROVIDED IN THIS STANDARD ARE FOR INFORMATIONAL PURPOSES ONLY AND MAY NOT BE COMPLETE. IT IS THE CUSTOMERS RESPONSIBILITY TO ENSURE THAT ANY INSTALLATION PERFORMED MEETS THE REQUIREMENTS SET FORTH IN THE CROSS-CONNECTION CONTROL PROGRAM STANDARDS.



**SUB CROSS-CONNECTION CONTROL PROGRAM STANDARD REFERENCE:**

- Section XI Pre-Installation Cross Connection Control Requirements
- Section XII Location of Backflow Assembly
- Section XIII Backflow Assembly Installation Guidelines
- Section XIV Post-Installation Cross Connection Control Requirements

Sections XI - XIV, in addition to the complete Cross Connection Control Program Requirements, are available at: <http://www.subutil.com/water/cross-connection-control-and-backflow-protection/>

SCALE: N.T.S.	 SPRINGFIELD UTILITY BOARD	BACKFLOW ASSEMBLY STANDARD DRAWING	DRAWING NUMBER
DRAWN BY: E.J.N.		<b>REDUCED PRESSURE BACKFLOW ASSEMBLY 2" &amp; SMALLER</b>	<b>W2.00</b>
WATER QUALITY: <i>DGE</i>			REVISED: 6/2/2015
ENGINEERING: <i>Bart &amp; McKee</i>			