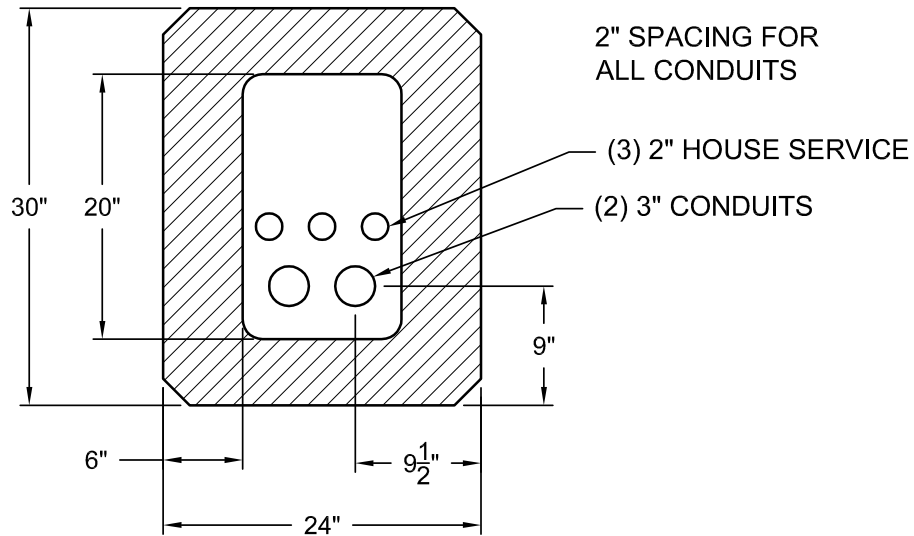
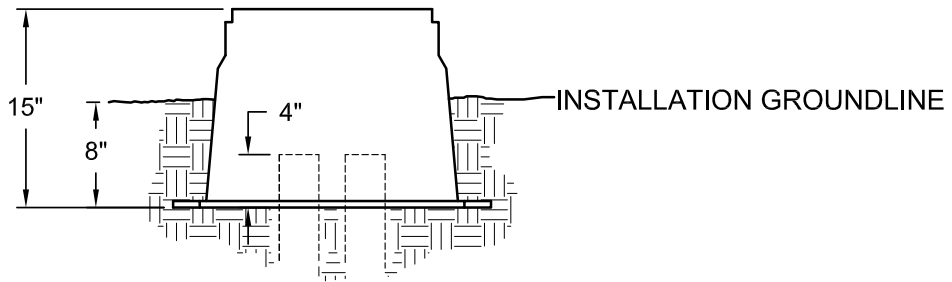


SIDE NEAREST TO HOUSE



PLAN VIEW



PROFILE VIEW

NOTES:

1. GROUND LEVEL INSIDE ENCLOSURE IS EVEN WITH BASE
2. USE WIDE SWEEPS, MINIMUM 3' RADIUS
3. CONDUIT STUBS PERPENDICULAR TO GROUND
4. CONDUIT MUST HAVE END BELLS OR A BEVELED INSIDE EDGE

REVISIONS	
Date	Description
6/18/02	Created
7/21/08	Updated format, drawing, and add note 4

	<p align="center">SPRINGFIELD UTILITY BOARD ENGINEERING STANDARD DISTRIBUTION PROCEDURES & POLICIES SECONDARY JUNCTION BOX ENTRANCE</p>	<p align="center">DATE DWN STD CHK APP 8/5/08 SK SK TJ RM</p> <p align="center">STANDARD NUMBER ESD 0075 Page 1 of 1</p>
--	--	---