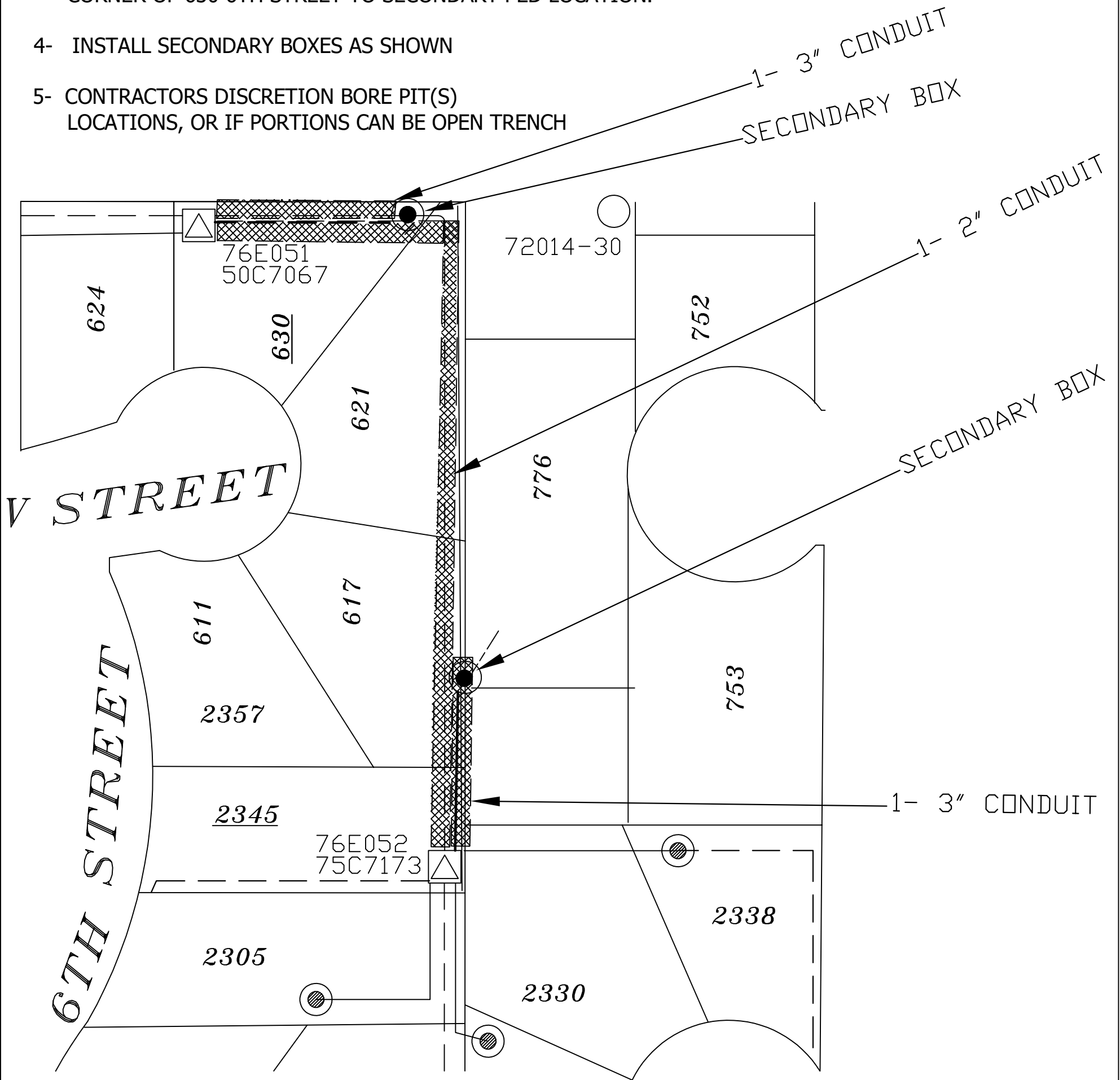
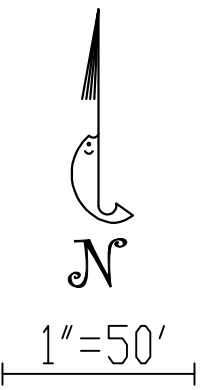


**NOTES:**

- 1- INSTALL NEW 2" CONDUIT FROM SE CORNER OF 2345 6TH STREET TO THE NW CORNER OF 630 V STREET
- 2- INSTALL NEW 3" CONDUIT FROM SE CORNER OF 2345 6TH STREET TO SECONDARY PED LOCATION.
- 3- INSTALL NEW 3" CONDUIT FROM NW CORNER OF 630 6TH STREET TO SECONDARY PED LOCATION.
- 4- INSTALL SECONDARY BOXES AS SHOWN
- 5- CONTRACTORS DISCRETION BORE PIT(S) LOCATIONS, OR IF PORTIONS CAN BE OPEN TRENCH



**ATTENTION:** Oregon law requires you to follow rules adopted by the Oregon Utility Notification Center. Those rules are set forth in OAR 952-001-0010 through OAR 952-001-0090. You may obtain copies of the rules by calling the center. Note: the telephone number for the Oregon Utility Notification Center is (503) 232-1987.

<b>SPRINGFIELD UTILITY BOARD</b> ELECTRICAL DIVISION, SPRINGFIELD, OREGON			
REPLACE PRIMARY/INSTALL SEC BOX 2345 6TH STREET TO 630 V STREET			
PROJECT ID.	CABLE	DRAWN BY	DK
CIRCUIT(S)	CHINDOK	ENGR.	NA
MAP(S)	9C	APPROVAL	WD NUM.
			120087
			SCALE 1"=50'
			DATE 07/22/20