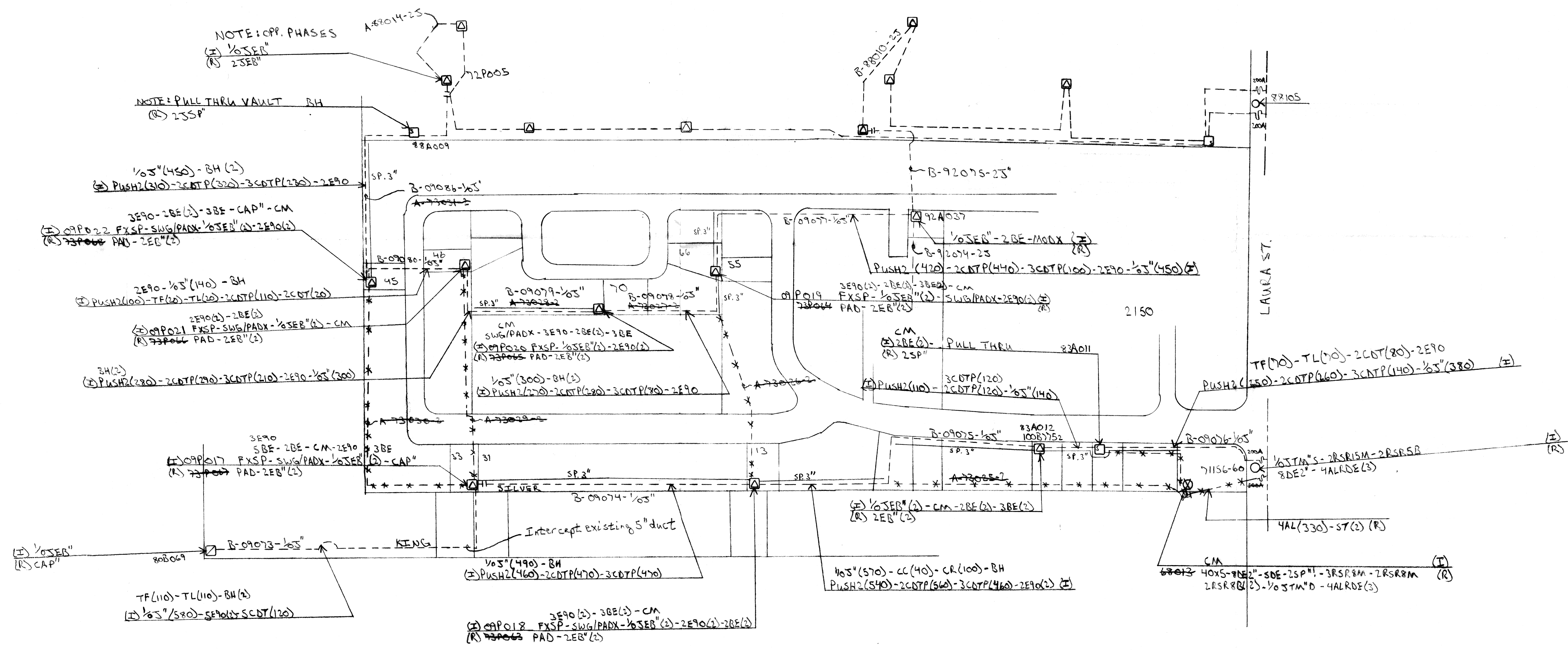


NOTE: CABLE YR. & MANUF.



NOTE: POLE #71156 TO BE CHANGED OUT ON ANOTHER JOB

Attention: Oregon law requires you to follow rules adopted by the OUNC. Those rules are set forth in OAR 952-001-0010 through OAR 952-001-0090. You may obtain copies in the rules by calling the center. *Note: OUNC 503-232-1987.

SPRINGFIELD UTILITY BOARD SPRINGFIELD, OREGON		
REPLACE OLD CABLE 2150 LAURA ST. (Monte Loma Trailer Park)		
DRAWN BY RBS	DATE 06/08/07	SCALE 1" = 100' 08169